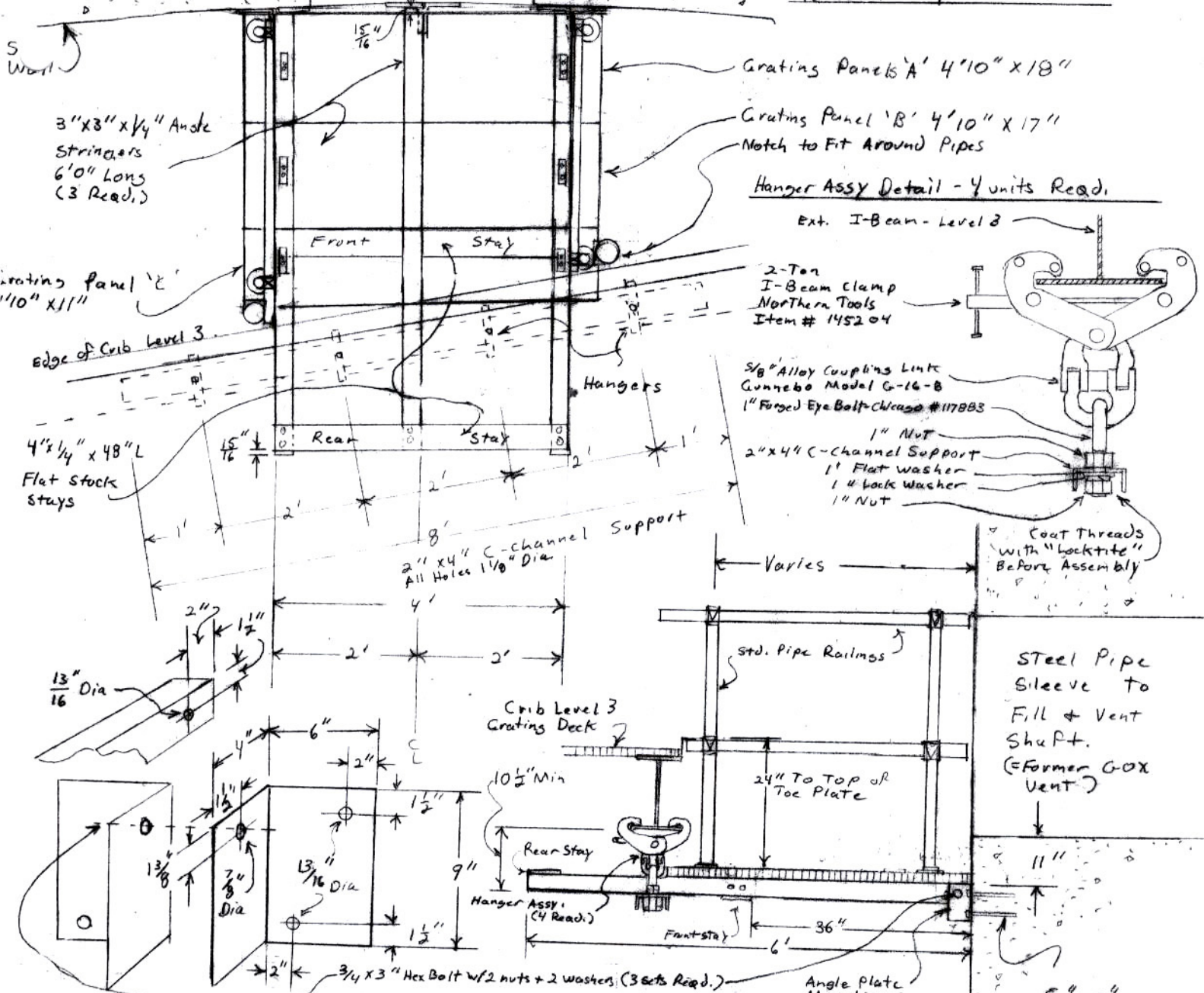


Plan View

Steel Pipe Sleeve
36"

Fill + Vent Shaft - Silo Crib Bridge Details

As Built Sept. 2004



Angle Plate Detail

Side View

Stays & Brackets Detail

All Holes 9/16" Dia.
All Bolts 1/2" x 2" Hex Head, 2" OC
w/2 washers, 1 nut, lockwasher

End View

